



## A guide to your son's Year 8 Assessment Report

### Year 8

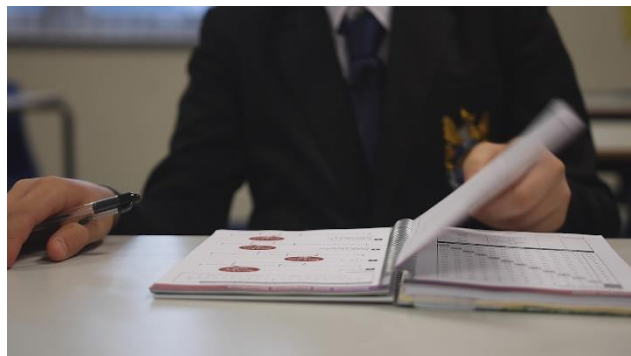
We are committed to helping our students to achieve their potential across all their subjects. The relationships between students, teachers and parents are crucial in enabling this success.

We have made changes to our reporting systems this year with the intention of helping parents to be more involved, and to make clearer what each student needs to do to achieve their potential.

On the report you will find the following information:

#### Starting Point

This is based on Key Stage 2 assessments. Students were ranked and then allocated a **GCSE Target Range**. The range shows the grades that each student is aiming for. This should not be seen as limiting, each student should aim for the top of this range. This system is intended to give us early indications of students who may need further support or challenge.



#### Attendance, Punctuality and Behaviour

This is a summary of some of the key data on attendance, punctuality, and key behaviours that may impact learning. A reminder that you can receive this information at any time using the School Gateway app.

Details of how to download the app can be found on the school website:

<https://www.westhillschool.co.uk/communication>

#### Progress Judgement

Each teacher considers all available assessment information and allocates a category related to the student's projected GCSE target range. We use colours for this section to give a visual impact. We have introduced the blue category in recognition that some students may not achieve Key Stage 2 assessment scores that represent their potential. We can use this information to review their target ranges.

Blue	Pupil is expected to exceed GCSE range
Green	Pupil is making the expected progress to achieve the expected GCSE range
Amber	Pupil is at risk of not achieving grades within his expected GCSE range
Red	Pupil is highly unlikely to achieve grades within his expected GCSE range

Achieving all 'Green' or a mix of 'Green' and 'Blue' should be celebrated. 'Amber' or 'Red' for individual subjects should be the starting point for conversations and actions with teachers. If all subjects are 'Amber' or 'Red' then we will already be working with your family to identify ways forward.



## Learning Habits

Our curriculum leaders have identified specific learning habits that are required to be successful in each subject. These are displayed in each teaching room and on the school website:

<https://www.westhillschool.co.uk/learninghabits>

Taking every opportunity to learn effectively
Using most of the learning habits, most of the time
Not consistently using the learning habits
Rarely using the learning habits, urgent action required.

The top category is used to highlight those students who are trying their hardest at all times, doing everything expected of them **and more**. Parents should be pleased if all subjects are 'Using most of the learning habits, most of the time'. Achieving any 'Taking every opportunity to learn effectively' is a cause for celebration. Where the picture isn't as positive, we will allocate additional support and interventions. For example, reports, mentoring and study-skills groups.

## Next Steps

These suggest ways forward and are specific to each subject. For students who are making excellent progress this will often be to read around the subject or to look ahead to see what topics are coming up. You can find our curriculum maps on each subject page of the school website at <https://www.westhillschool.co.uk/subjects> The maps show the curriculum themes, skills that are being developed, key vocabulary and assessment focus areas. Parents can use this information to help support students and start conversations about areas of study.

## Report Enquiries

If you have any questions about your son's report, please contact school by phoning the school reception office on 0161 338 2193, or alternatively, by emailing the school email address on [admin@westhillschool.co.uk](mailto:admin@westhillschool.co.uk)

For attendance, punctuality or behaviour enquiries, please contact Mr Evans – Head of Year 8.

For subject-specific enquiries, please contact your son's subject teacher.

For target ranges and general report enquiries, please contact Mr Butterworth – Deputy Headteacher: Quality of Education.